



adler®

AEX EV Fuse



FEATURES:

- 1000 VDC EV high-speed power fuse
- Rated Current: 70-400 A
- Rated Breaking Capacity: 50 kA at 1000 VDC
- Time Constant:(L/R)2±0.5 ms
- Dimensions: 31x86 mm, 38x83 mm, 51x89 mm
- Special purpose fuse for EV/HEV automotive use
- Ideal for high power EV PDU and battery protection
- Ref. to IEC 60269-4
- Recommended fuse holder: BFR106-35-M8, BFR108-43-M10. BFR108-48-M10

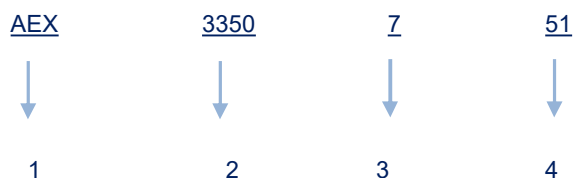
ELECTRICAL SPECIFICATIONS

Part Number	Rated Current	Ampere Code	Rated Voltage	Melting I²t	Clearing I²t	Breaking Capacity	0.5I _n Dissipation (W)
AEX2700731	70A	2700	1000 VDC	1847	3879	50 kA@1000 VDC	3.63
AEX2800731	80A	2800		2886	6061		3.80
AEX2900731	90A	2900		4156	8728		4.00
AEX3100731	100A	3100		5657	11880		4.24
AEX3125738	125A	3125	1000 VDC	7389	15517	50 kA@1000 VDC	5.58
AEX3150738	150A	3150		11545	24245		6.43
AEX3175738	175A	3175		17680	37129		7.07
AEX3200738	200A	3200		29556	62068		7.14
AEX3250751	250A	3250	1000 VDC	41678	87525	50 kA@1000 VDC	9.71
AEX3300751	300A	3300		66501	139653		11.07
AEX3350751	350A	3350		90515	190083		12.91
AEX3400751	400A	3400		133464	280275		13.50

Note:

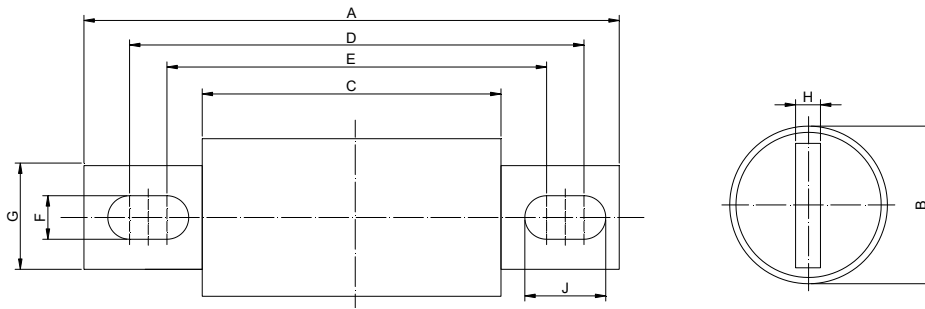
(1) Temperature Rise: ≤50 K at 50 % of rated current at 20±5°C environment temperature.

PART NUMBER SYSTEM



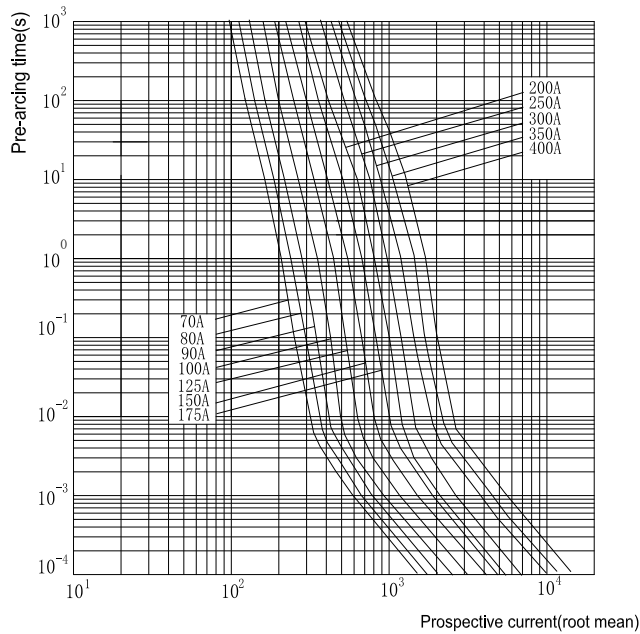
- 1Product Series AEX
- 2 Ampere Code 350 A (see ampere code column of electrical specifications)
- 3 Mounting..... 7: Bolt
- 4 Supplementary Code 31, 38, 51: default

IMENSIONS (mm)



P/N	A	B	C	D	E	F	G	H	J
AEXxxx731	125±1.2	31±0.5	86±0.8	109±0.8	102±0.8	8.5±0.5	22±0.5	5±0.1	12.0±0.5
AEXxxx738	140±1.2	38±0.5	83±0.8	118±0.8	100±0.8	10.5±0.5	25±0.5	6±0.1	19.5±0.5
AEXxxx751	146±1.2	51±0.5	89±0.8	126±0.8	107±0.8	10.5±0.5	38±0.5	6±0.1	20.0±0.5

Time Current (reference)



Current Limiting (reference)

